

Performing a clustering analysis

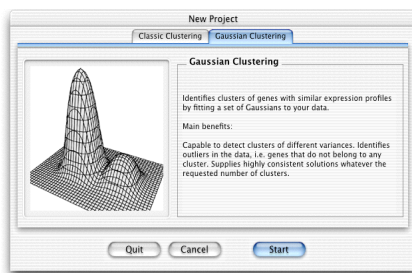
A

Load data via the file open menu (Standalone version) or run ArrayMiner from GeneSpring via the External Programs Interface.



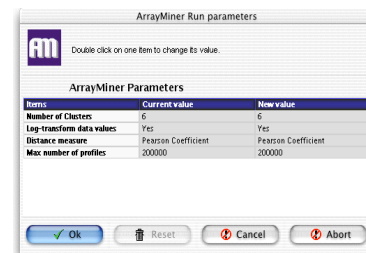
B

Choose the clustering type you want



C

Edit the clustering parameters



D

Wait for the end of loading, check the data in the graphic window, and hit the optimize button to begin clustering.



E

Stop the algorithm when an "Optimization Finished" box appears, or at any later time when the displayed solution appears satisfactory



G

Save your solution (Standalone version). If running under GeneSpring, refer to the manual or the "Running ArrayMiner from GeneSpring" sheet.



F

Examine the solution with help of the graphic windows. Resume the optimization from step D if appropriate.

